

# UNLOCKING THE POWER OF DATA

Designed by **MNX Online**

# 2024

**WEBINAR**

R



**Comisión  
Europea**



WHO WE ARE

# about

## Committed to excellence

Territories aiming to modernize will find in **MNX Online a strategic ally** that not only supports them in implementing innovative technological solutions but also tailors these solutions to their specific needs.

Our **sustainable tourism** approach seeks to enhance quality of life while preserving local cultural and natural heritage.

We implement technological solutions that ensure efficient and transparent resource management, aligning tourism development with the territory's sustainability goals.



# 02



## WHY CHOOSE US

At MNX Online, we merge **sustainability and innovation** to drive responsible economic growth.

We design enduring, tailored solutions for each territory, equipping them for the future.

# OUR COMPANY

**MNX Online** is a pioneering company in technological innovation, specializing in **smart and sustainable** tourist destinations at an international level.

With over a decade of experience, we are committed to local talent and FIWARE technology to transform territories. Recognized with the **SME of the Year** Award in Las Palmas, we continue to expand globally, bringing the **Canary Islands to the world** with efficient and sustainable solutions.



[www.mnxonline.com](http://www.mnxonline.com)  
[www.tourilab.com](http://www.tourilab.com)

SMART CITIES SPECIALISTS

# 03



COMMUNITY



SOME ACHIEVEMENTS



WHAT WE DO

# Smart technology for smart people

# expertise

# 04

We are more than **technology** providers; we are innovators and creators committed to **sustainability**, proud to lead a movement that benefits both the tourism industry and society. At MNX Online, we are shaping the future of tourism.

## SMART TERRITORIES

Advanced strategies powered by FIWARE technology for efficient and innovative territories

## DATA SPACES

Unlocking the innovative potential of data to serve both the public and private sectors.

## SUSTAINABLE TOURISM

Redefining our core sector: smart and sustainable solutions for the modern traveler.

## HIGH IMPACT

Driving large-scale initiatives that make a difference.

OUR AIM

# Revolutionizing the tourism industry

# 05

# m

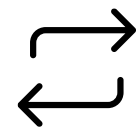


TERRITORIES

# Reasons to evolve **expectations**

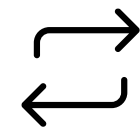
# 06

Decisions



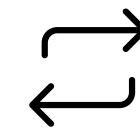
**Efficiency**

Policies



**Sustainability**

Systems



**Intelligence**

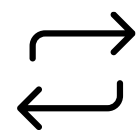
TERRITORIES

# Keys

## How to evolve

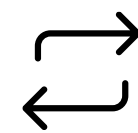
# 07

**Better  
decisions**



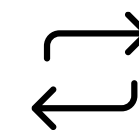
Efficiency

**Better  
policies**



Sustainability

**Better  
systems**



Intelligence



# Avoi

**d1** Data silos

**2** Addressing the sector from a narrow focus

**3** Fear of competitors





DATA SPACES  
**how**  
real-time  
sharing

to



DATA SPACES

# Criteria

## Basic conditions

10

### Security

**Trusted** environment with **enhanced security** measures.

### Co(o)mpetence

**Complement** your own information with that of others.

### Control

**What, with whom, when,** and **how** data is exchanged.

### \$ustainability

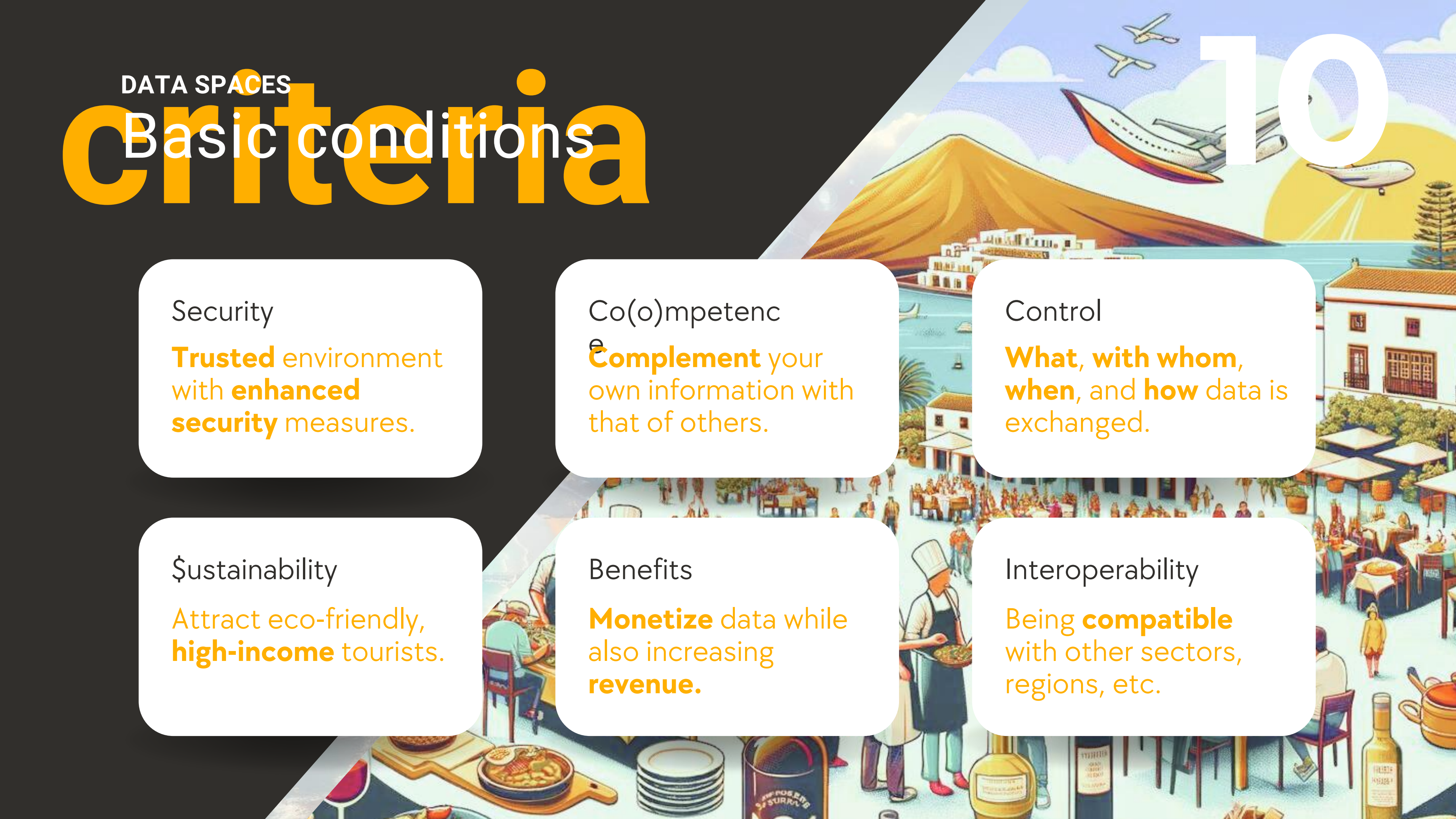
Attract eco-friendly, **high-income** tourists.

### Benefits

**Monetize** data while also increasing **revenue**.

### Interoperability

Being **compatible** with other sectors, regions, etc.



DATA SPACES

# TOURiLab-SDG

# 11

t

(THE TRAVELLER)  
**TANIA'S JOURNEY**  
POWERED BY TOURILAB-SDG

1 **SUSTAINABILITY PROFILE**



**SUSTAINABILITY PROFILE**  
6,2  
RATING

The illustration shows a woman with dark hair, wearing a pink top and blue shorts, standing on a dark horizontal line. To her right is a white card titled 'SUSTAINABILITY PROFILE' with a small portrait of her and a green leaf icon. Next to the card is the text '6,2 RATING'. The background is light gray with faint outlines of clouds and a city skyline.





TANIA'S JOURNEY  
POWERED BY TOURILAB-SDG

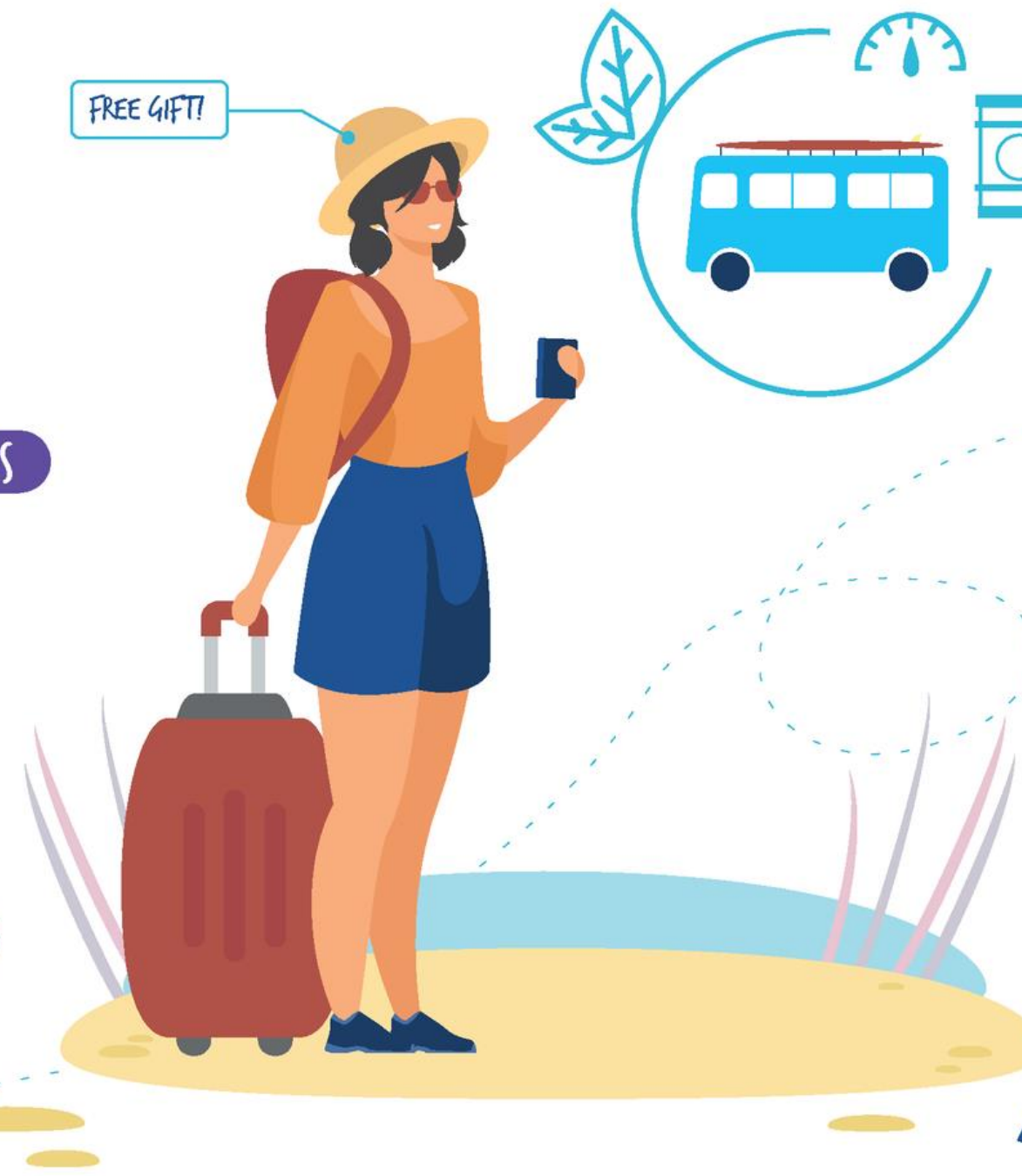
- 1 SUSTAINABILITY PROFILE
- 2 FIND SUSTAINABLE BUSINESSES
- 3 TRAVEL & CHECK IN





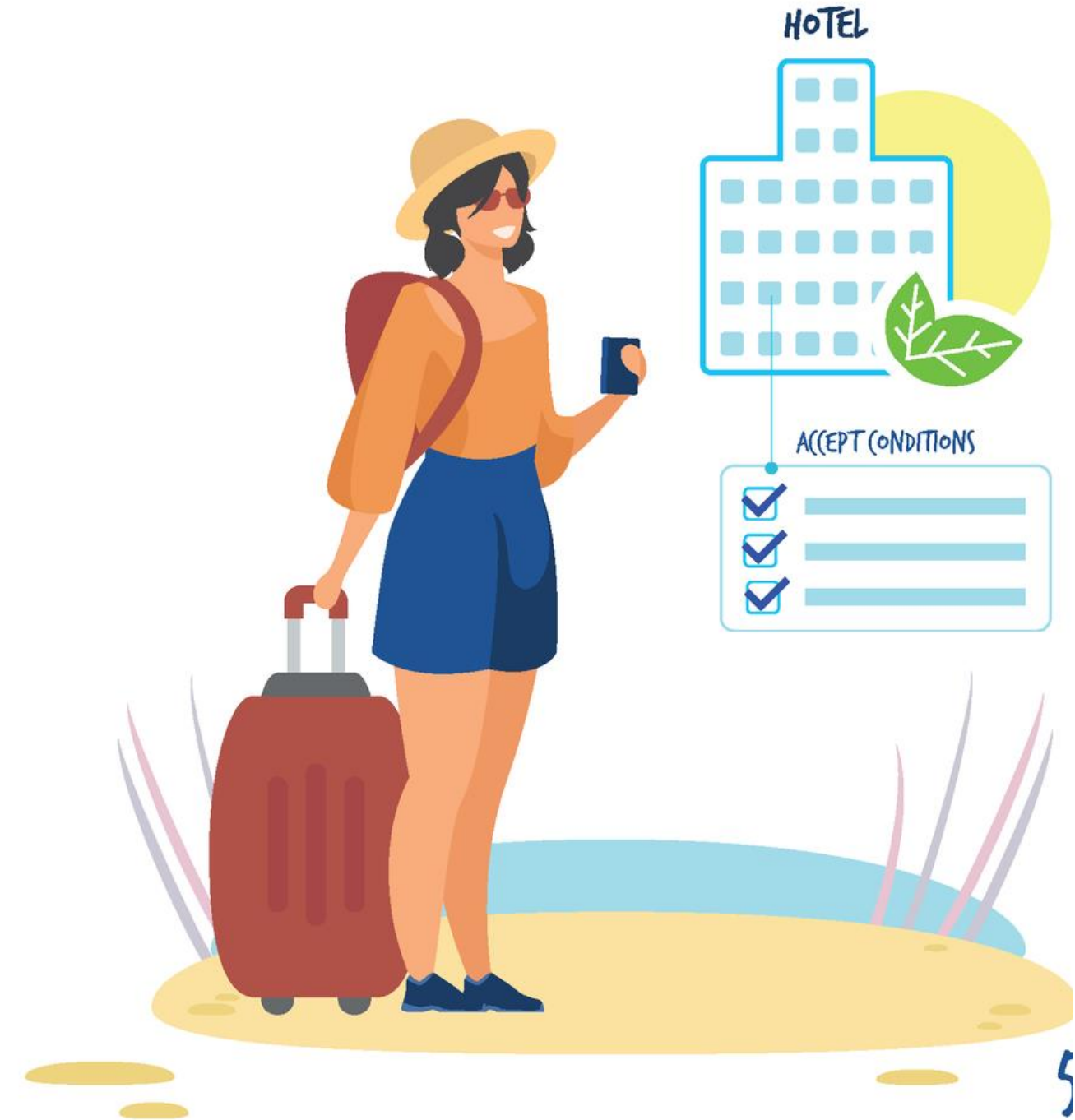
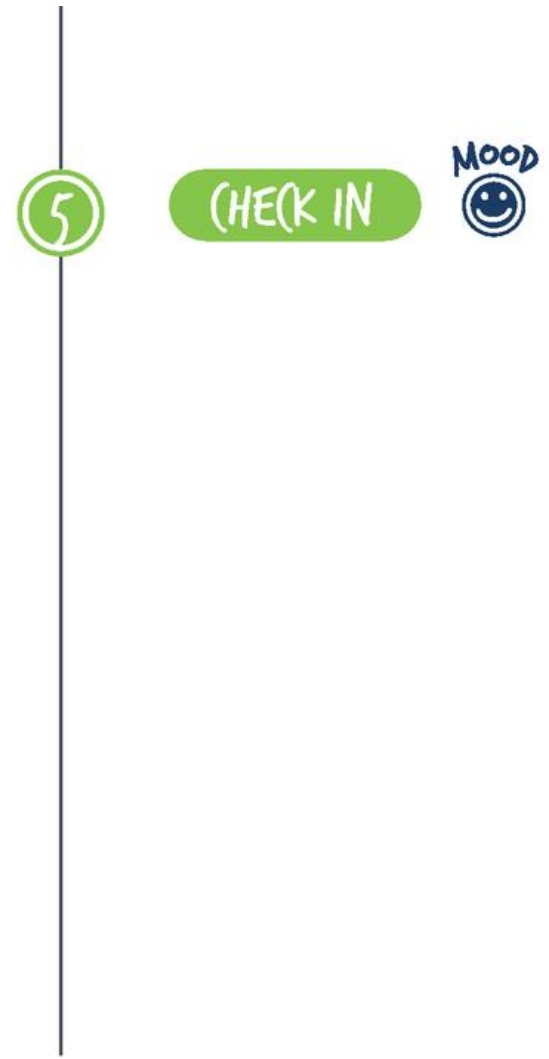
**TANIA'S JOURNEY**  
POWERED BY TOURILAB-SDG

- 1 SUSTAINABILITY PROFILE
- 2 FIND SUSTAINABLE BUSINESSES
- 3 TRAVEL & CHECK IN
- 4 ROAD TRIP & CONSUMPTION



DATA SPACES  
**piilo**  
**TOURiLab-**  
**SDG**

t

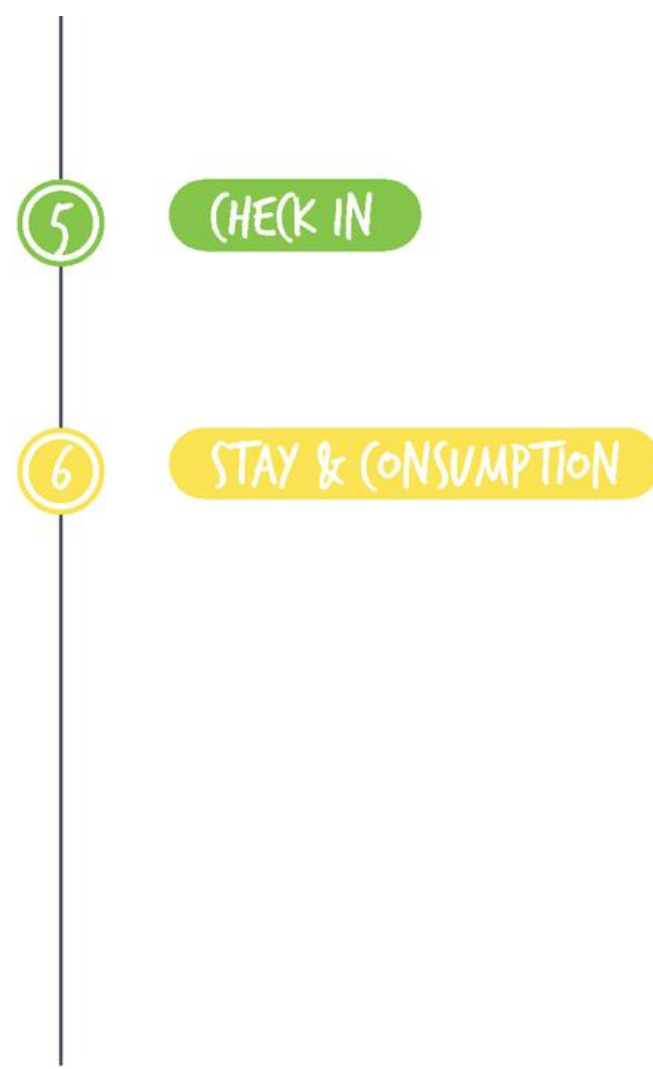


TANIA'S JOURNEY  
POWERED BY TOURILAB-SDG

DATA SPACES

# TOURiLab-SDG

t



TANIA'S JOURNEY  
POWERED BY TOURILAB-SDG



DATA SPACES  
**TOURiLab-**  
**SDG**

t



TANIA'S JOURNEY  
POWERED BY TOURILAB-SDG

DATA SPACES  
**piilo**  
**TOURiLab-**  
**SDG**

t



**TANIA'S JOURNEY**  
POWERED BY TOURILAB-SDG



DATA SPACES  
**pilot**  
**TOURiLab-**  
**SDG**



## TOURILAB-SDG

Sustainable & Smart Tourism Dataspace

AN INITIATIVE OF



AND THE GENTLE  
COLLABORATION OF TANIA!



FIWARE IHUB

# spin-off

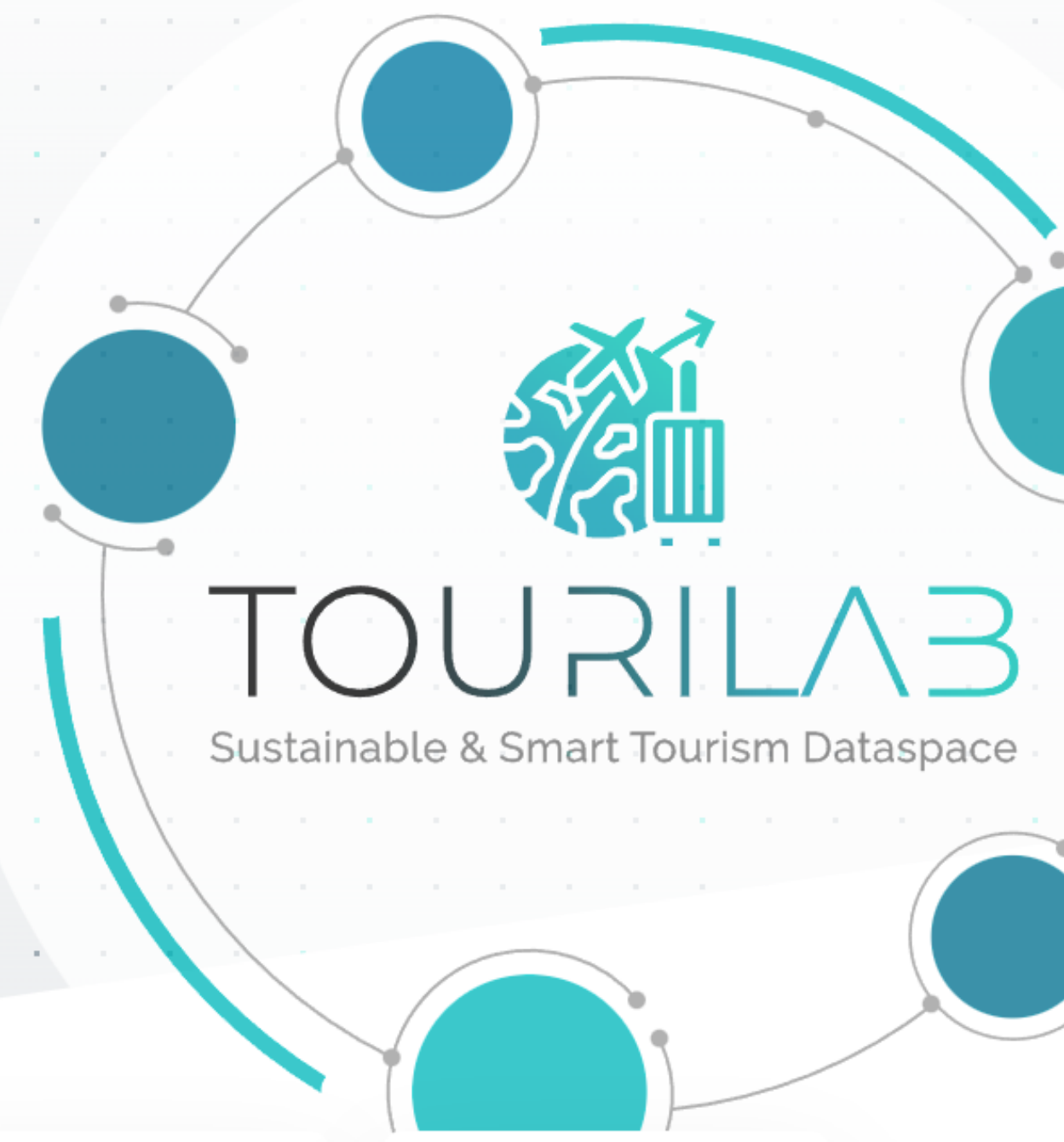
## TOURiLab

# 20



**Revolutionizing  
tourism =  
sustainability  
(+)  
innovation**

TOURiLab, as a FIWARE iHUB, is transforming the tourism industry and beyond, fostering innovation and sustainability across various regions, with the Canary Islands as a highlighted success story.





INNOVATION  
**STARTS HERE**  
www.tourilab.com



# TOURILAB

Sustainable & Smart Tourism Data Spaces

# BIENVENIDOS A TOURILAB FIWARE IHUB

15 Y 16 DE OCTUBRE DE 2024 | PARQUE TECNOLÓGICO DE  
FUERTEVENTURA  
#INNOVATIONSTARTSHERE



DATA SPACES  
**g**FUTURE  
?

22



DATA SPACES  
**goa**  
FUTURE

23



LET'S TALK

Have a project in mind?  
**contact**

**THANK YOU**

**We're willing to work with you!**

If you have any questions, contact us:



(+34) 689 251 393



info@mnxonline.com



Parque Tecnológico de Fuerteventura  
Oficina A108



www.mnxonline.com