



Dr. Dolores Ordóñez  
Director  
AnySolution  
Palma, 27/05/2025



Tourism will continue to grow in the next few years (especially in Europe).

Saturation in time and space vs. overcrowding of the destination

Tourism must be managed = recognise its weight and importance

Involve key stakeholders

Balances

Data and technology





# TOURISM OF TOMORROW DATA DRIVEN DESTINATIONS HUB

Creation of a Competence Centre to support data  
management in tourism destinations



Tourism of Tomorrow  
Data-Driven Destinations Hub

EU Competence centre to support data  
management in tourism destinations



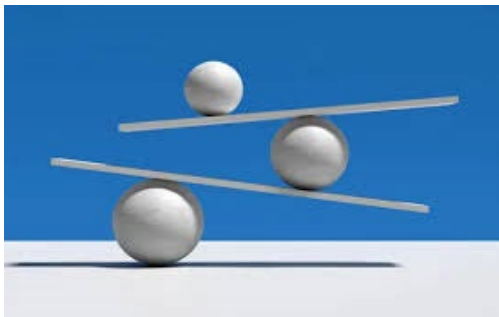
Co-funded by  
the European Union







# Four clusters selected based on data



Managing the balance between residents and visitors



Climate change mitigation and adaptation



Redistributing tourist flows in space and time



Supporting emerging destinations to attract quality and sustainable tourism

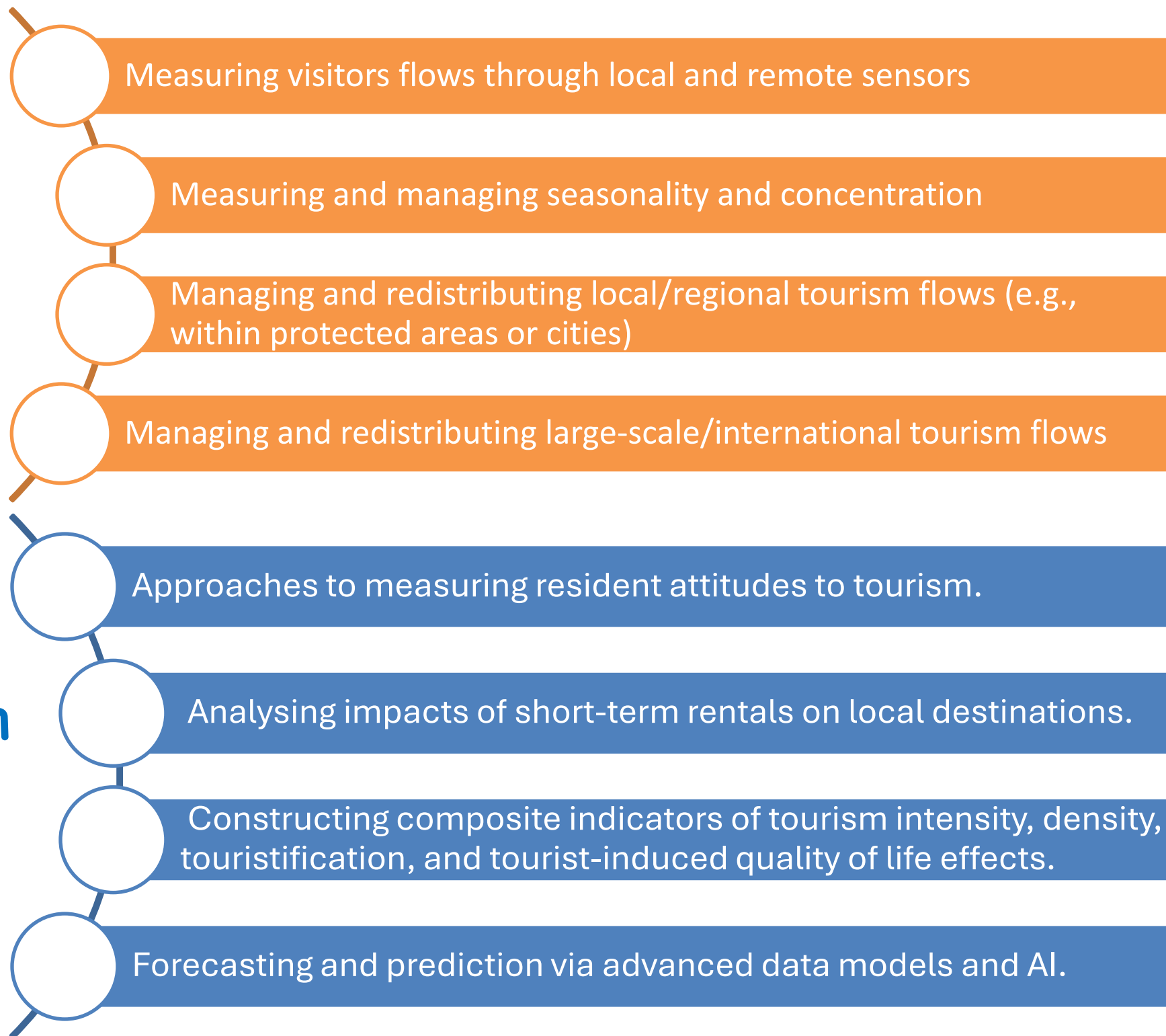
Facing these challenges based on data, analysis and measurement





# Redistributing tourist flows in space and time

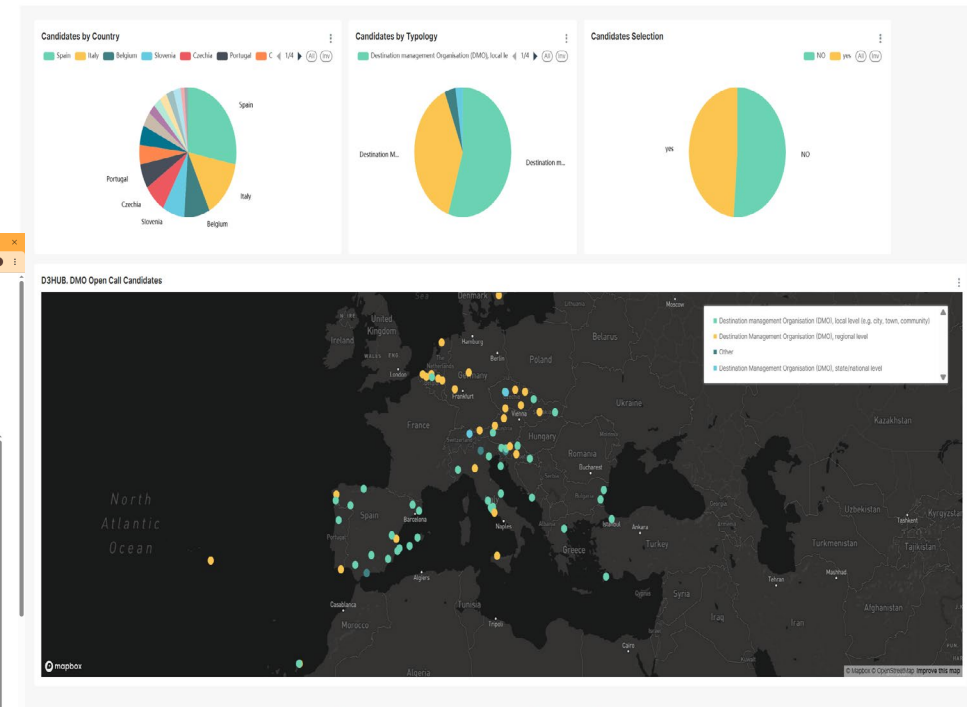
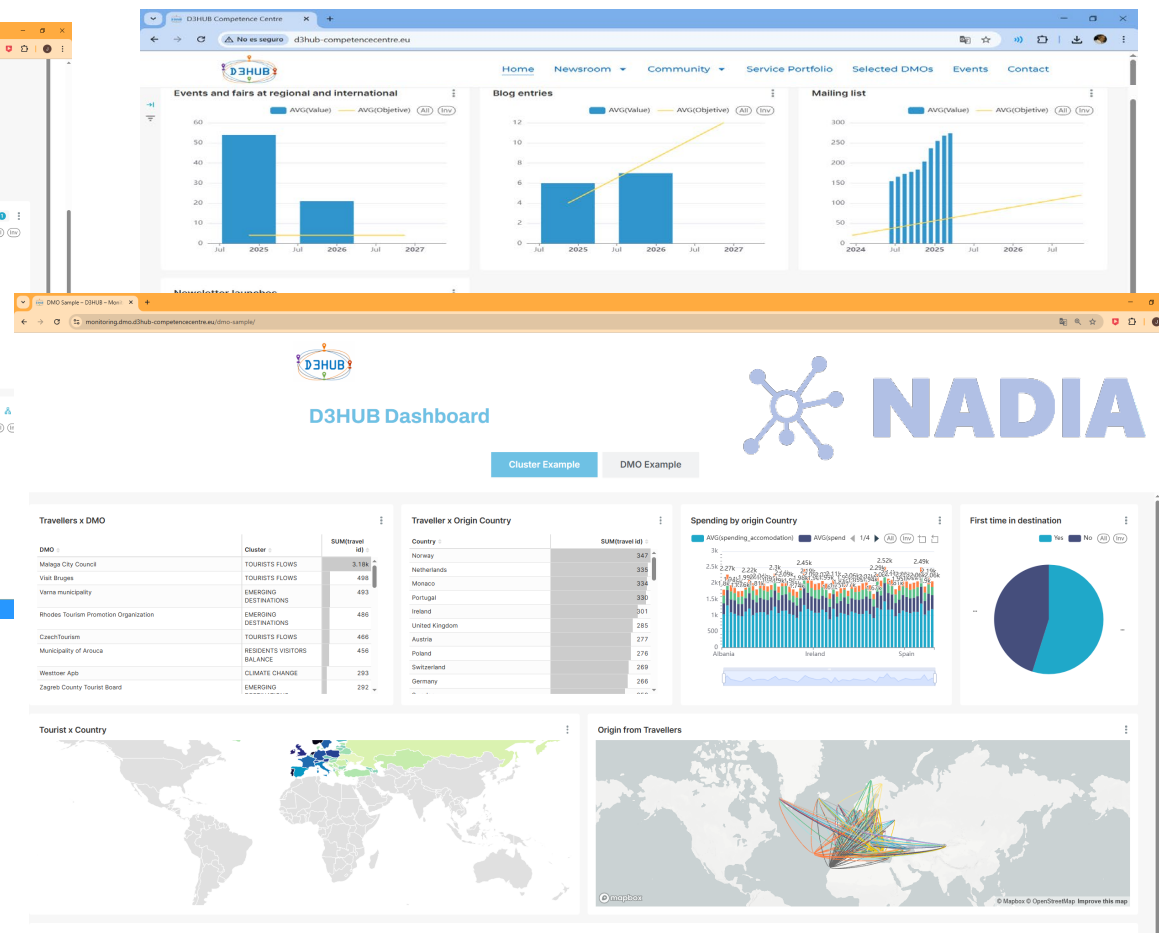
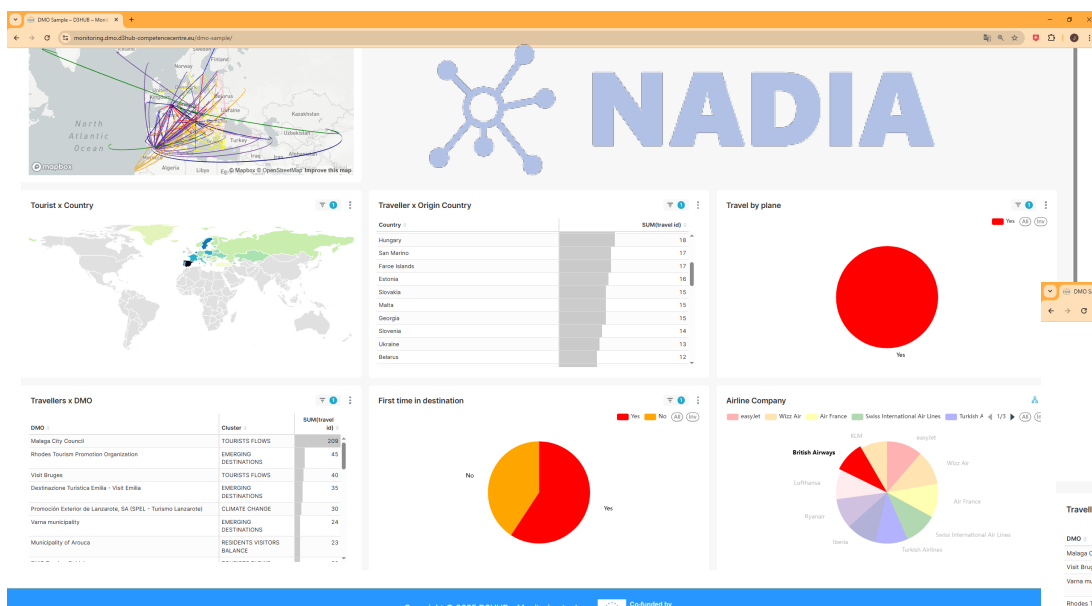
## Managing the balance between residents, visitors, and stakeholders





# Transforming Data into VALUE

- Collecting data from heterogeneous sources
- Measuring sustainable tourism indicators
- Highly customised Dashboards







# DEPLOYTOUR

## Common European Tourism Data Space



Co-funded by  
the European Union



# PROJECT MILESTONES

DEPLOYTOUR addresses the challenges of fragmented and inaccessible tourism data by enhancing access to information through:

**Deploy the technical infrastructure**  
of the Common Tourism European  
Dataspace (ETDS)

**Implement five use case pilots** that  
will act as demonstration of the tangible  
advantages the ETDS can bring and its  
impact on the European tourism sector

**Define a governance framework**  
by developing the rules and roles of  
the different stakeholders involved  
in governing the future ETDS

**Ensure the interoperability,  
transversality, and synergies** with  
other data and tourism initiatives

**Implement a sound dissemination,  
communication and exploitation  
strategy**

Kick off  
meeting

Rolebook  
of the ETDS

Use Case  
Pilots  
Launch

ETDS minimum  
viable product

Minimum Viable  
Rulebook

On-line training  
programme

ETDS final  
prototype

2024

2025

2026

2027



# TRANSVERSALITY, COMPLEMENTARITY AND SYNERGIES

Synergies with other data spaces,  
projects and initiatives:

- Mobility data space, deployEMDS
- Smart Cities Data Space
- Green Deal
- Media data space, TEMS
- Skills data space
- Cultural Heritage data space
- D3HUB
- DSSC
- SIMPL
- EDIC
- National, local initiatives
- Ministries
- ...

DEPLOYTOUR supports the Tourism Transition Pathway's pledges to advance the strategy for digital and sustainable transition.

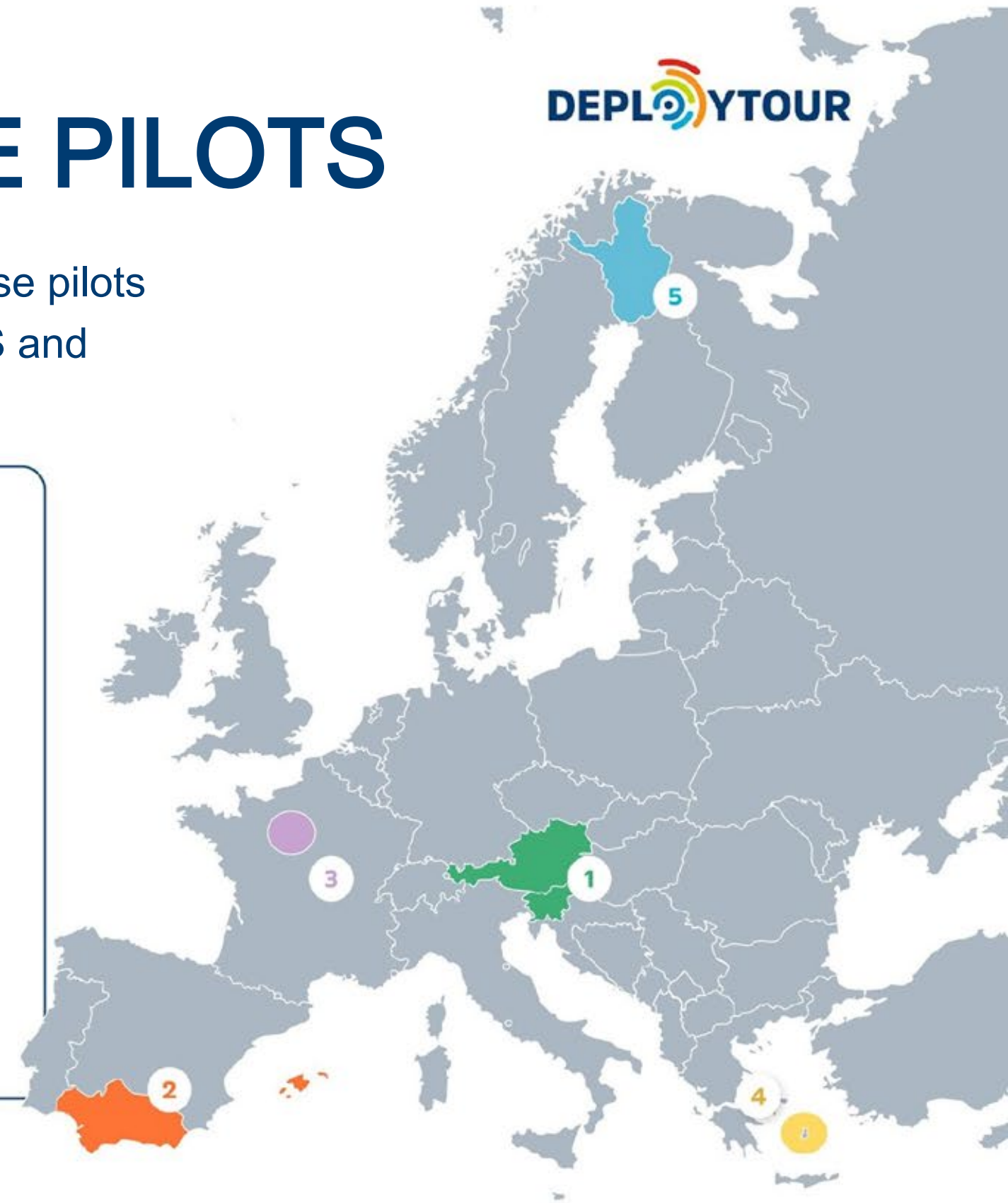


To generate and ensure sound synergies to reinforce complementarities, avoid overlapping and generate new added value.

# DEPLOYTOUR USE CASE PILOTS

The DEPLOYTOUR consortium is implementing five use-case pilots across Europe to show the tangible advantages of the ETDS and address key challenges in tourism:

- 1 Tourist overcrowding in natural areas and environmental impacts: Use Case Pilot 1
- 2 Transforming mature destinations to make them more competitive, resilient, and sustainable: Use Case Pilot 2
- 3 Meeting hyper -personalized client demands in the MICE sector: Use Case Pilot 3
- 4 Managing high -seasonality destinations: Use Case Pilot 4
- 5 Addressing the lack of a centralized platform to empower tourism SMEs: Use Case Pilot 5





# DEPLOYTOUR

European Tourism Data Space



Co-funded by  
the European Union



[www.deploytour.eu](http://www.deploytour.eu)

Co-funded by the European Union. Views and opinions expressed are however those of the author(s) only and do not necessarily reflect those of the European Union or the European Health and Digital Executive Agency (HaDEA). Neither the European Union nor HaDEA can be held responsible for them.