

Better cross-border travel: Railways and sustainable tourism

Alberto Mazzola, CER Executive Director
September 2025

TRACK
ON
FOR
EUROPE



CER Members

78%

81%

94%



Railways support sustainable tourism

75% of CO₂ emissions in tourism are traffic-related. Railways offer attractive services that help lighten tourists' ecological footprint and create memorable holiday experiences.



Strong green credentials

- Most climate-friendly mode of transport
- On average 5x less CO₂ than flying
- On average 7x less energy intensive than driving
- 4 out of 5 trains run on low-emission electricity from increasingly renewable sources



Inspiring travel opportunities

- Departure and arrival directly in city centres
- Epic train journeys through spectacular scenery including UNESCO world heritage sites
- Attractive combinations of events and journeys
- Itineraries on less-travelled routes and low-season travel
- Night travel on sleeper trains for optimised travel time and accommodation budget



Easy planning and booking

- Interrail Pass to explore 33 European countries with one ticket
- Ongoing improvements of cross-border ticketing with implementation of CER Ticketing Roadmap
- Extension of ticketing systems across multiple modes of transport for door2door mobility
- More and more digital solutions for booking, ticketing and information services

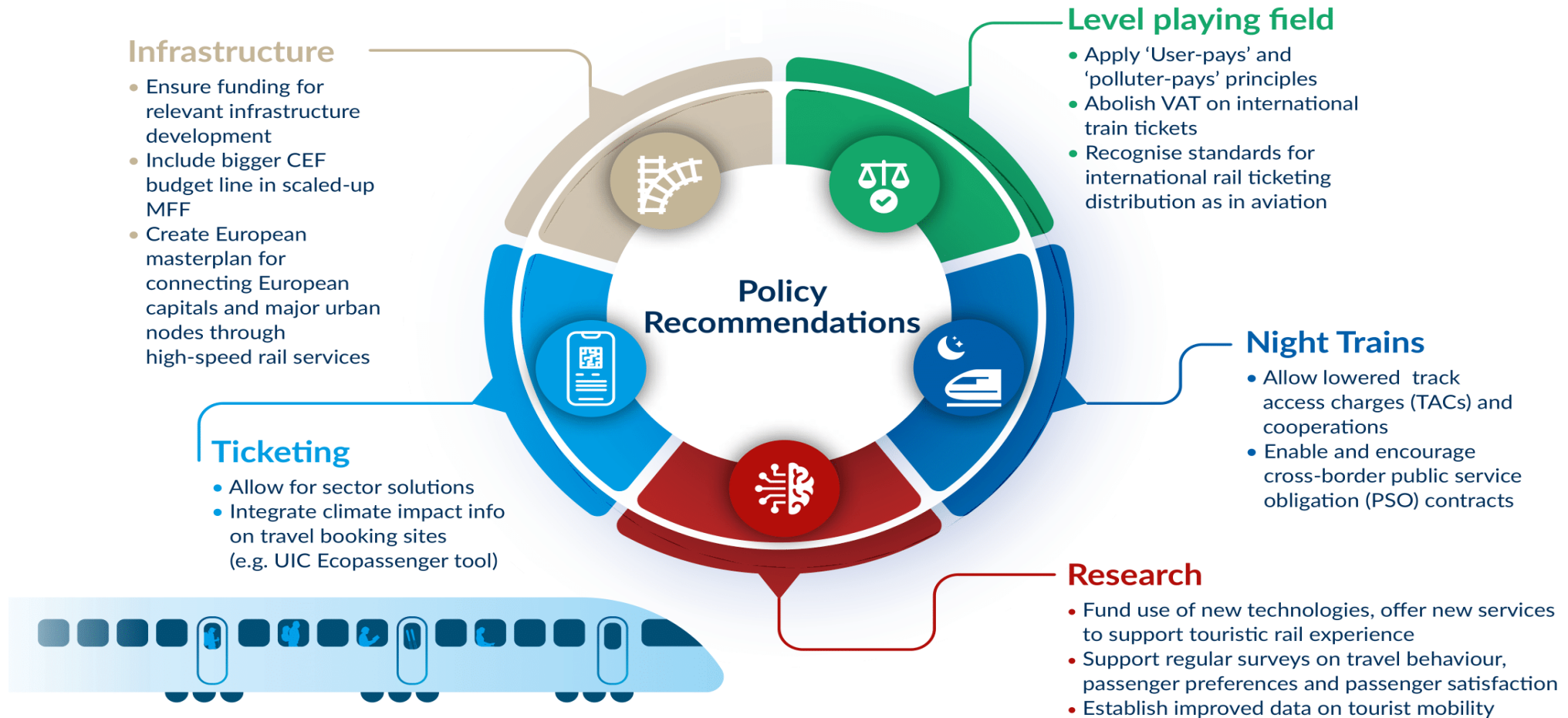


Relaxing travel experience

- Comprehensive customer information before, during, and after the journey
- Pragmatic solutions for journey continuation in case of missed connections
- Customer service at tourist stations to support all passengers' journeys, including families, persons with reduced mobility and travellers with pets
- On-board services including dining cars, night cabins, and family zones
- Scenic views directly from your seat and time for yourself

Railways support sustainable tourism

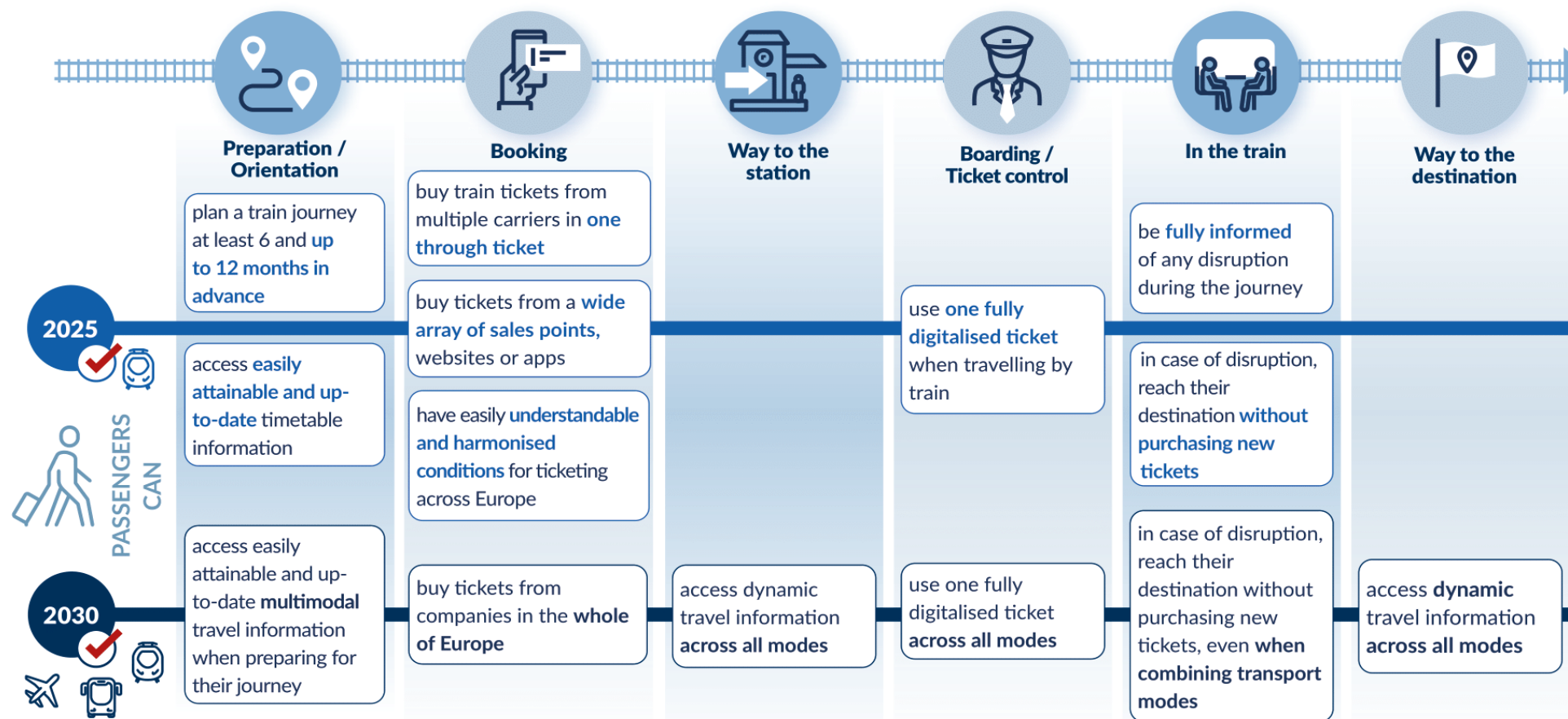
A large portion of Europeans (82%)* are willing to change their travel habits for more sustainable practices. How can EU transport policy support them?



* Source: Eurobarometer survey 'Attitudes of Europeans towards tourism', November 2021

CER Ticketing Roadmap for seamless international passenger rail travel

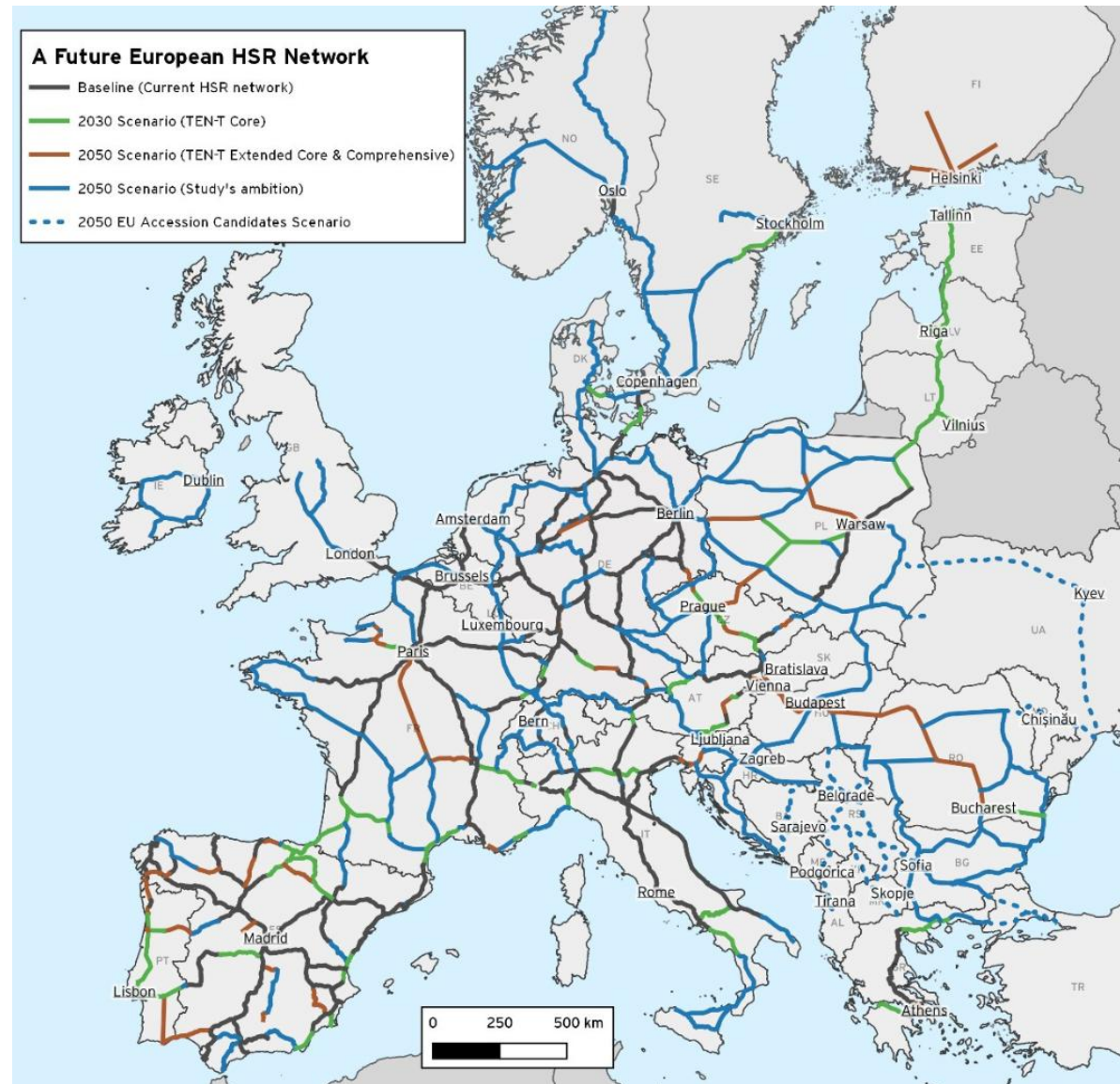
How we get there



What we need to achieve it

- Financial and regulatory support for the Ticketing Roadmap
- **Facilitated cooperation** between rail companies as part of the overall objective to achieve the Green Deal
- Data exchange based on **voluntary contractual agreements** and explicit recognition of the **rights of data generators**
- A **level playing field** for all transport modes to improve the competitiveness of rail

European High-Speed Rail Network



2025 European Survey

Q. If there were fast and reliable high-speed trains between all European capitals and major urban areas, how likely would you be to take a high-speed train instead of flying for short and medium-distance trips in Europe?

Split according to geographical areas

									
	TOTAL	France	Germany	Italy	Spain	Poland	Southern Europe	CEE	Northern Europe

All respondents: 5,107

Total likely	77%	75%	69%	84%	86%	81%	85%	80%	67%
Very likely	41%	38%	35%	43%	44%	46%	46%	48%	31%
Rather likely	36%	37%	34%	41%	42%	35%	39%	32%	36%
Total not likely	16%	15%	21%	10%	11%	13%	10%	14%	22%
Not very likely	11%	8%	14%	8%	9%	9%	8%	11%	15%
Not at all likely	5%	7%	7%	2%	2%	4%	2%	3%	7%
I don't know	7%	10%	10%	6%	3%	6%	5%	6%	11%

THANK YOU

Discover our full manifesto at
www.cer.be/ontrackforeurope



ON TRACK FOR EUROPE

